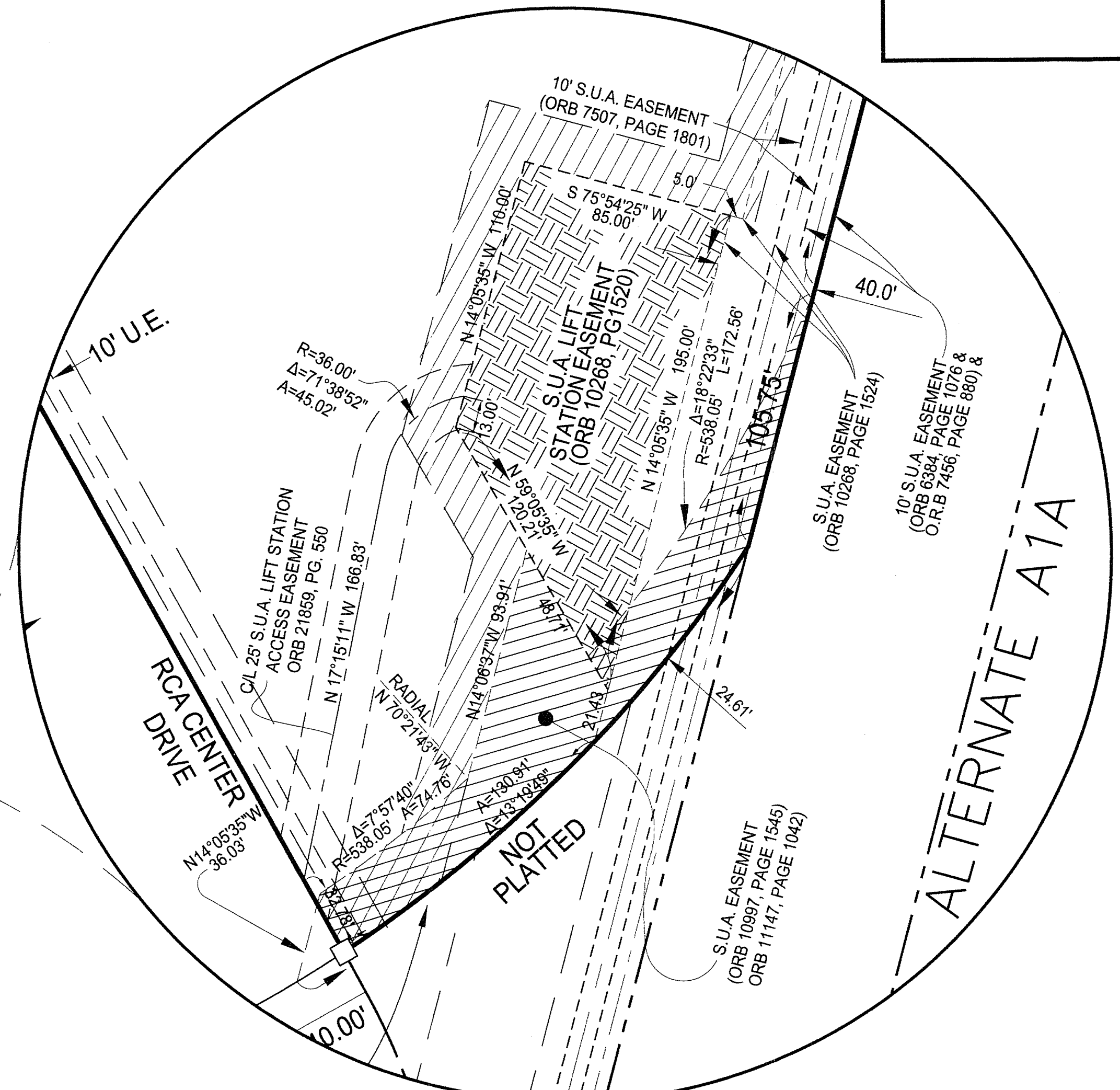
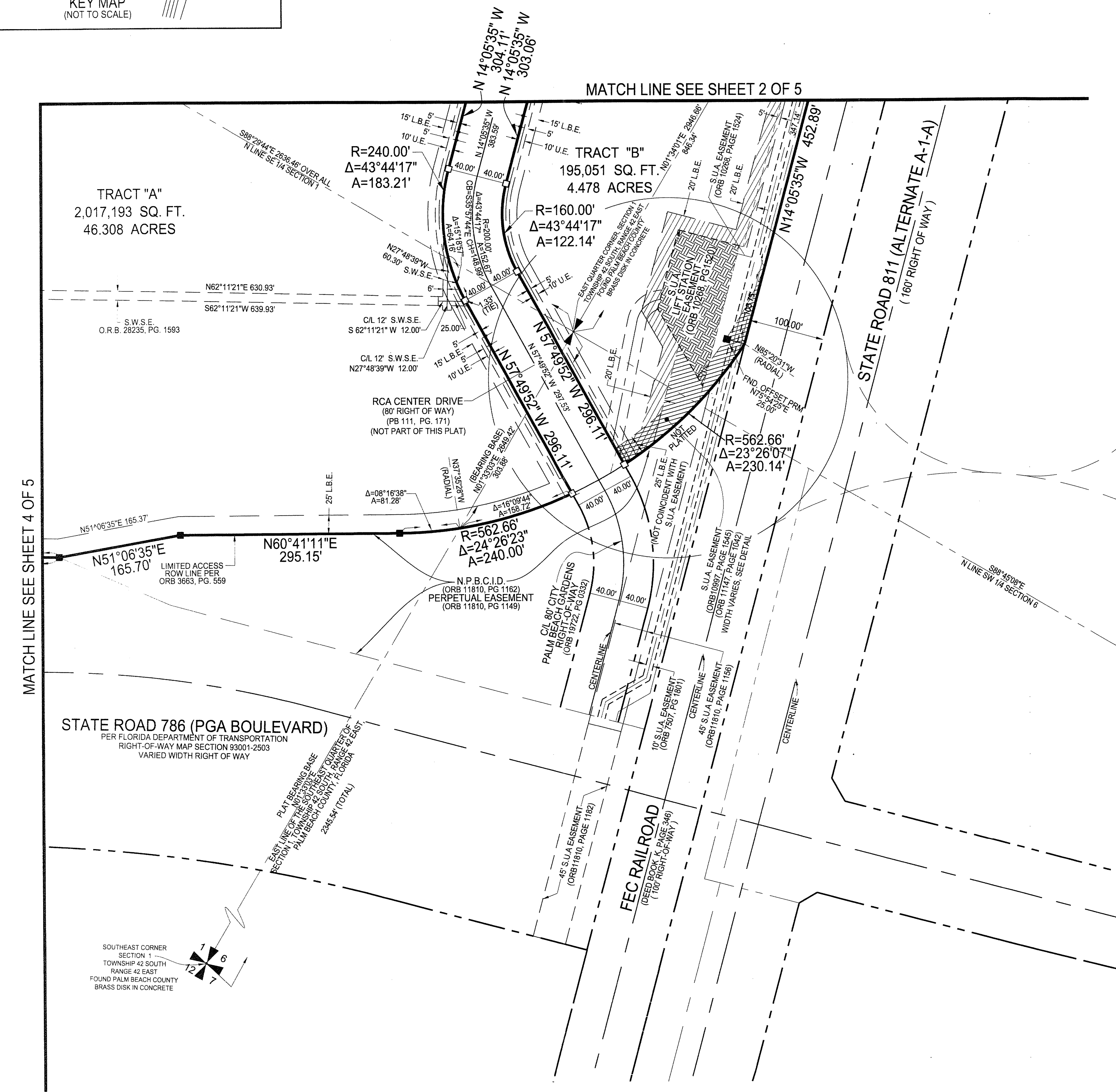
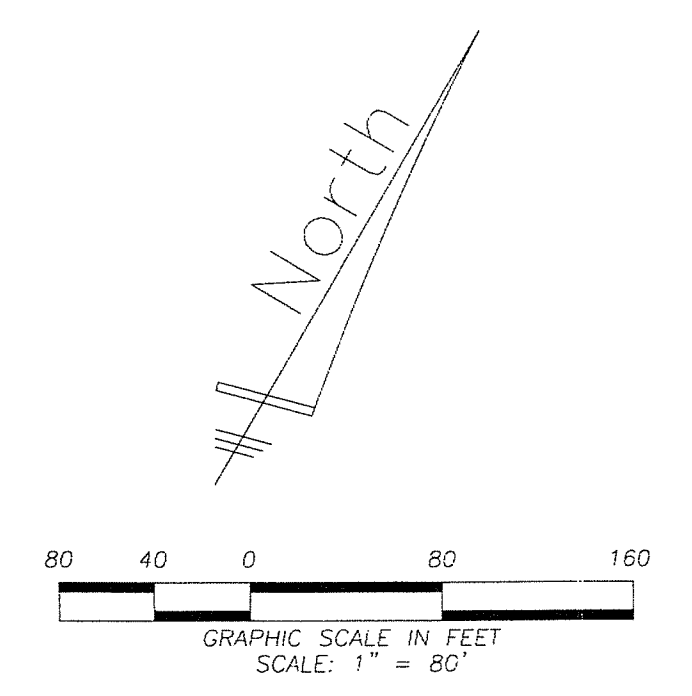
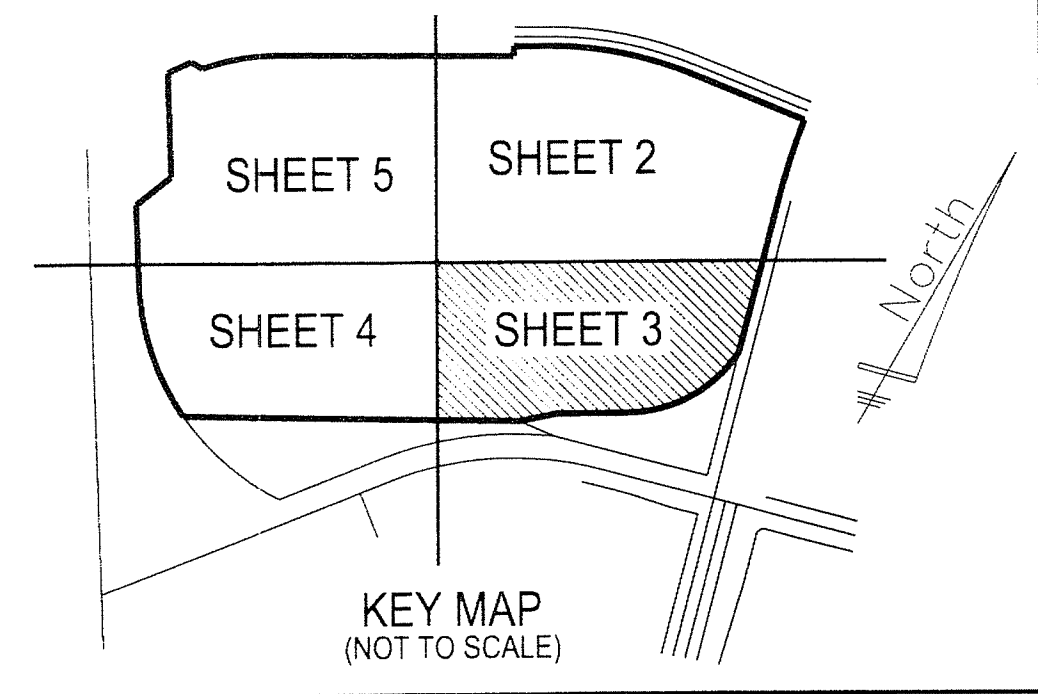


# MACARTHUR PARCEL 5A-REPLAT

BEING A REPLAT OF WATER MANAGEMENT TRACTS 1 & 2, PRESERVE TRACT, OPEN SPACE TRACTS 1 & 2 AND LOTS 1 THROUGH 17,  
AS SHOWN ON MACARTHUR PARCEL 5A, AS RECORDED IN PLAT BOOK 111, PAGES 171-175, PUBLIC RECORDS OF PALM BEACH COUNTY, FLORIDA  
SITUATE IN SECTION 1, TOWNSHIP 42 SOUTH, RANGE 42 EAST AND SECTION 6, TOWNSHIP 42 SOUTH,  
RANGE 43 EAST, CITY OF PALM BEACH GARDENS, PALM BEACH COUNTY, FLORIDA  
AUGUST 2016 SHEET 3 OF 5

158



### ABBREVIATIONS

- |   |  |   |
|---|--|---|
| R = RADIUS                                  | LB = LICENSED BUSINESS                                   | POB = POINT OF BEGINNING                      |
| A = ARC LENGTH                              | LBE = LANDSCAPE BUFFER EASEMENT                          | POC = POINT OF COMMENCEMENT                   |
| D = DELTA                                   | LME = LAKE MAINTENANCE EASEMENT                          | PPAE = PUBLIC PEDESTRIAN ACCESS EASEMENT      |
| CB = CHORD BEARING                          | LMAE = LAKE MAINTENANCE ACCESS EASEMENT                  | PRM = PERMANENT REFERENCE MONUMENT            |
| CH = CHORD DISTANCE                         | NPBCID = NORTHERN PALM BEACH COUNTY IMPROVEMENT DISTRICT | RWB = RIGHT-OF-WAY                            |
| C/L = CENTER LINE                           | NR = NON RADIAL  | RPB = ROAD PLAT BOOK                          |
| DB = DEED BOOK                              | O/A = OVERALL LOT DIMENSION                              | SLSE = SEACOAST UTILITY LIFT STATION EASEMENT |
| DE = DRAINAGE EASEMENT                      | ORB = OFFICIAL RECORD BOOK                               | SO. FT. = SQUARE FEET                         |
| FEC = FLORIDA EAST COAST RAILROAD           | OS = OPEN SPACE  | SR = STATE ROAD                               |
| FDOT = FLORIDA DEPARTMENT OF TRANSPORTATION | SWSE = SEACOAST UTILITY WATER AND SEWER EASEMENT         | SUA = SEACOAST UTILITY AUTHORITY              |
| FND = FOUND                                 | PAE = PUBLIC ACCESS EASEMENT                             | UE = UTILITY EASEMENT                         |
| FPL = FLORIDA POWER & LIGHT                 | PB = PLAT BOOK   | WME = WATER MANAGEMENT EASEMENT               |
|   | PG. = PAGE   | WMT = WATER MANAGEMENT TRACT                  |

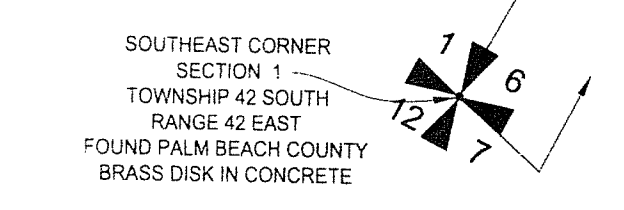
### LEGEND

- FOUND 4"x4" CONCRETE MONUMENT STAMPED "PRM LB 4431" PERMANENT REFERENCE MONUMENT (P.R.M.), UNLESS OTHERWISE NOTED.
- ▲ FOUND NAIL & DISK "PRM LB #4431" UNLESS OTHERWISE NOTED
- FOUND 5/8" IRON ROD & CAP "LB #4431" UNLESS OTHERWISE NOTED
- SET 4"x4" CONCRETE MONUMENT STAMPED "PRM LB 4431" PERMANENT REFERENCE MONUMENT (P.R.M.), UNLESS OTHERWISE NOTED.

MATCH LINE SEE SHEET 4 OF 5

MATCH LINE SEE SHEET 2 OF 5

STATE ROAD 786 (PGA BOULEVARD)  
PER FLORIDA DEPARTMENT OF TRANSPORTATION  
RIGHT-OF-WAY MAP SECTION 93001-2503  
VARIED WIDTH RIGHT OF WAY



LB 4431 675 West IndianTown Road, Suite 200, Jupiter, Florida 33458 TEL 561-746-8454

CAD K:\AUTOCAD2000\014242\111-171\11-025\DWG\11-025-306.DWG			
REF K:\AUTOCAD\MACARTHUR\1578-105C.DWG			
FLD	AM.	FB.	FC.
		288	12,14-15
OFF	D.P.K., E.C.		17-18
CKD	D.C.L.	SHEET 3 OF 5	DATE AUGUST 2016
		DWC	D11-025P